

EYEING CELEBRITY STYLE

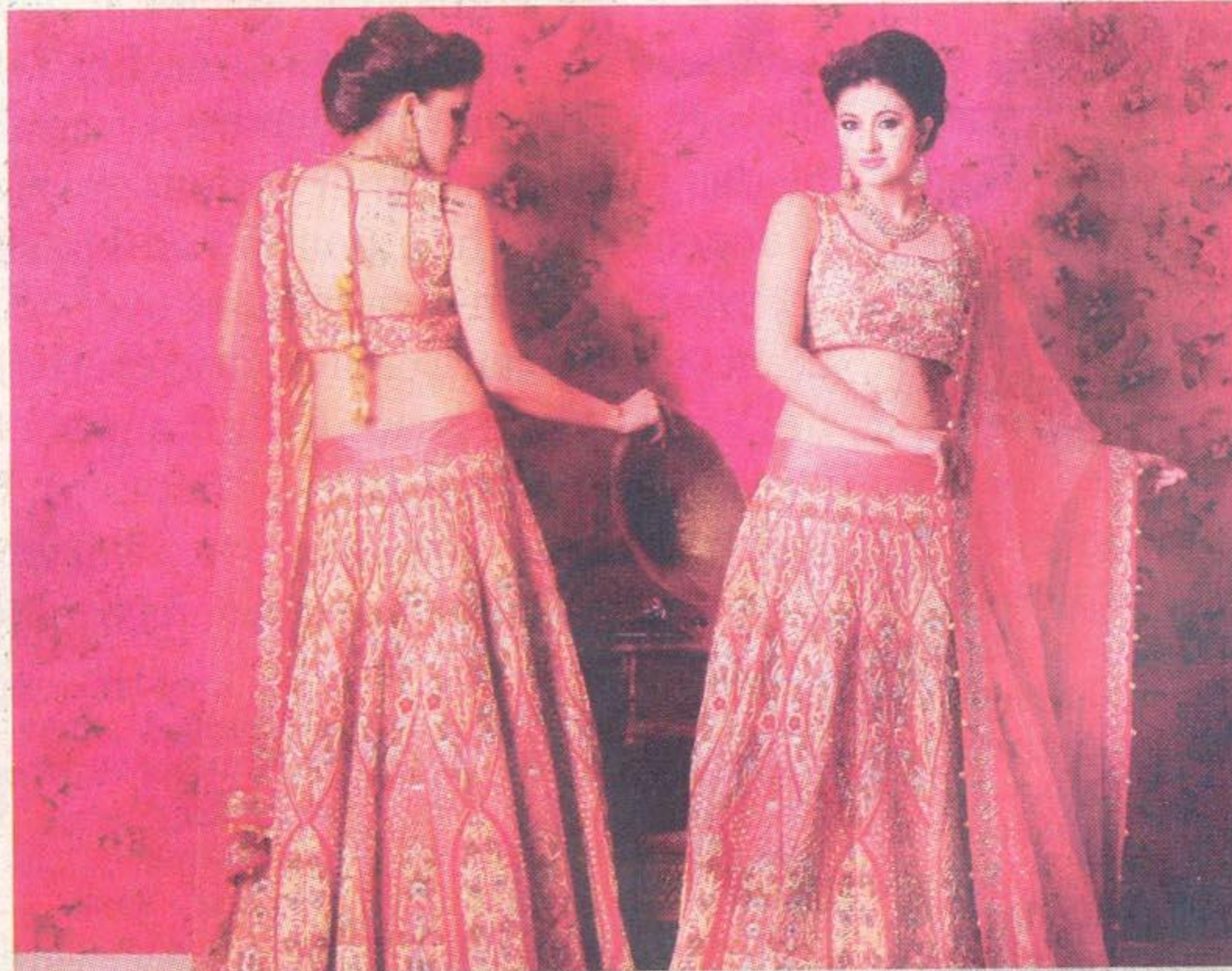
Vogue Eyewear launches Deepika Padukone's capsule collection called Deepika's Selects, with two sun styles chosen by the actor herself. The styles are in line with the latest trends and come embossed with Deepika Padukone's initials. A mix of hues, ranging from opal blue to dark red havana are part of the collection. Available at select retail outlets.

DENIM HUB

Denim trends this season shout out for ripped, torn and love-worn jeans. Whether you're faithful to skinny styles or prefer a slouchy, boyfriend cut, the distressed trend is bound to sail through. It's My Life Jeans presents its new distressed denims for the season, priced ₹6,900 onwards. These are available at www.imljeans.com.

MONUMENTAL MOTIFS

CaratLane.com introduces its Enamel Royale Collection, a jewellery line inspired by the enamel renderings on some of the monuments in Rajasthan. Motifs consist of vines, flowers, birds and paislies. The range starts from ₹22,811 and goes up till ₹80,018. Available on the portal.



INTRICATELY ATTIRED

Designer Kaveri Batla introduces her bridal collection named Karigari, as it amalgamates different techniques of hand and machine embroidery—zari, katdana and khicha, sequins, nakashi, pearl swarovski and others. Straight jackets with lehengas, shararas, anarkalis and more are part of the new offering. Available at J-44, Central Market, Lajpat Nagar-II.

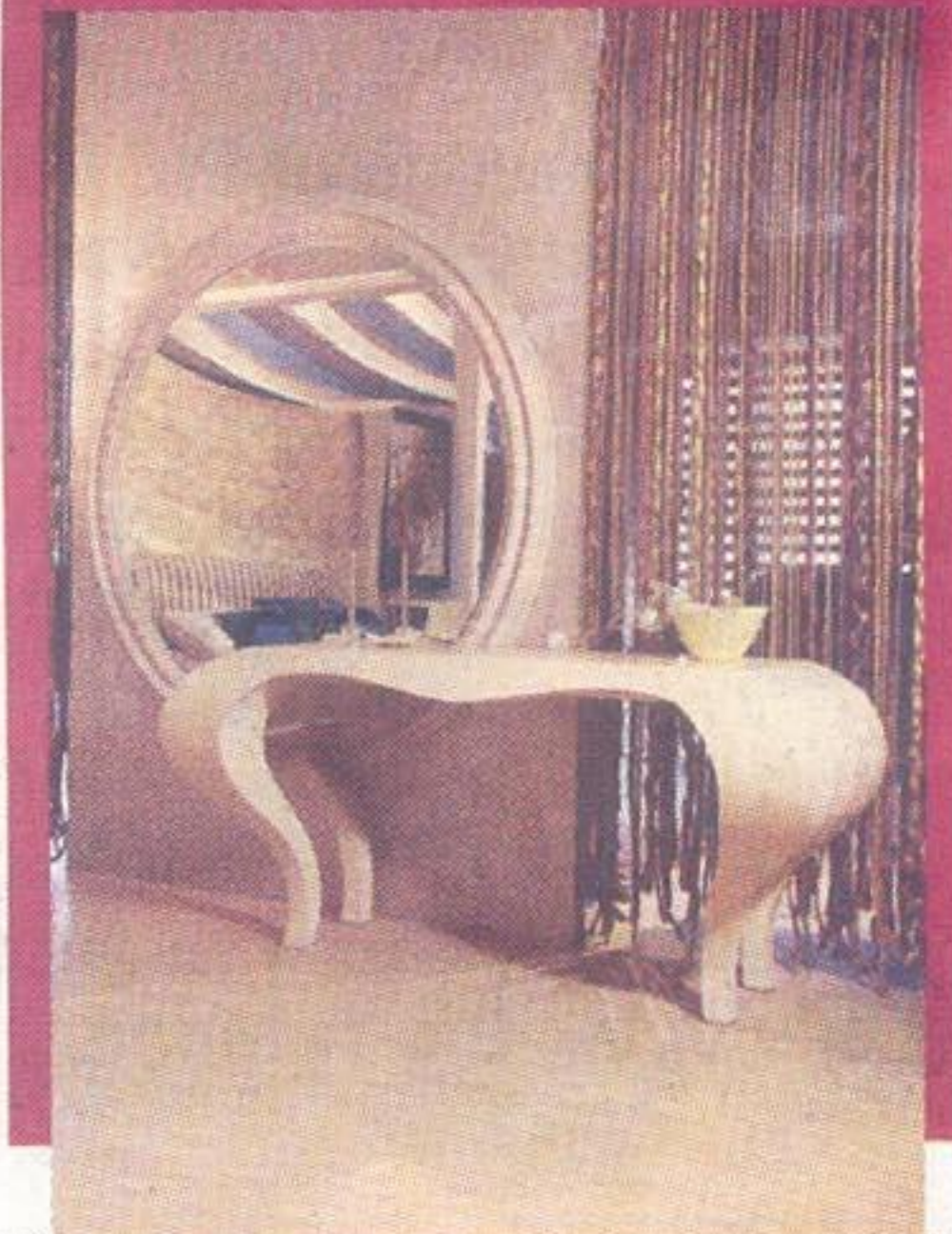
NATURALLY FOR SUMMERS

Soma introduces Nostalgic Bloom, its 100 per cent organic spring summer collection, in subtle colours and careful construction. The

dominant colours this season are marie, blue and white, dusky blues, moonlight grey and some bright shades like reds thrown in. Available at 46-47, Meher Chand Market.

SUITING YOUR STYLE

La Sorogeeeka, an interior solution brand, presents its Allure Ensemble collection, that offers a bedroom suite, from which you can pick and choose items like a four-poster bed, wardrobes, dressing mirror, television unit, a large day bed, centre tables, side tables, chairs and chaise. The selection of colours include royal blue, peach orange and light beige. Available at 306, Second Floor, DLF Emporio, Nelson Mandela Road, Vasant Kunj, and Phase II, Shop No. B210 A, Noida. Prices of all the products are on request.



EYEING CELEBRITY STYLE

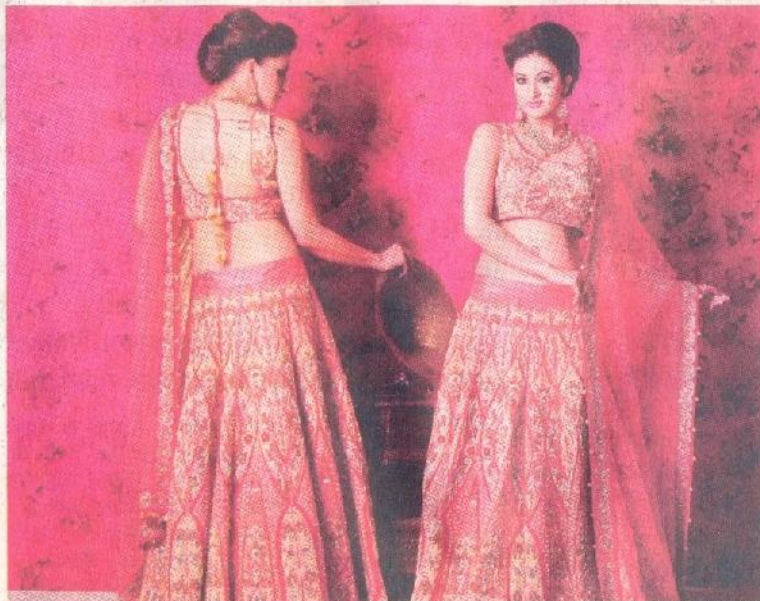
Vogue Eyewear launches Deepika Padukone's capsule collection called Deepika's Selects, with two sun styles chosen by the actor herself. The styles are in line with the latest trends and come embossed with Deepika Padukone's initials. A mix of hues, ranging from opal blue to dark red havana are part of the collection. Available at select retail outlets.

DENIM HUB

Denim trends this season shout out for ripped, torn and love-worn jeans. Whether you're faithful to skinny styles or prefer a slouchy, boyfriend cut, the distressed trend is bound to sail through. It's My Life Jeans presents its new distressed denims for the season, priced ₹6,900 onwards. These are available at www.inkljeans.com.

MONUMENTAL MOTIFS

CaratLane.com introduces its Enamel Royale Collection, a jewellery line inspired by the enamel renderings on some of the monuments in Rajasthan. Motifs consist of vines, flowers, birds and paislies. The range starts from ₹22,811 and goes up till ₹80,018. Available on the portal.



INTRICATELY ATTIRED

Designer Kaveri Batta introduces her bridal collection named Karigari, as it amalgamates different techniques of hand and machine embroidery—zari, katdana and khicha, sequins, nakashi, pearl swarovski and others. Straight jackets with lehengas, shararas, anarkalis and more are part of the new offering. Available at J-44, Central Market, Lajpat Nagar-II.

NATURALLY FOR SUMMERS

Soma introduces Nostalgic Bloom, its 100 per cent organic spring summer collection, in subtle colours and careful construction. The

dominant colours this season are marie, blue and white, dusky blues, moonlight grey and some bright shades like reds thrown in. Available at 46-47, Meher Chand Market.

SUITING YOUR STYLE

La Sorogeeeka, an interior solution brand, presents its Allure Ensemble collection, that offers a bedroom suite, from which you can pick and choose items like a four-poster bed, wardrobes, dressing mirror, television unit, a large day bed, centre tables, side tables, chairs and chaise. The selection of colours include royal blue, peach orange and light beige. Available at 306, Second Floor, DLF Emporio, Nelson Mandela Road, Vasant Kunj, and Phase II, Shop No. B210 A, Noida. Prices of all the products are on request.

